



Central Bedfordshire Adoption Scorecard

Local Authority Scorecard April to December 2012

February 2013

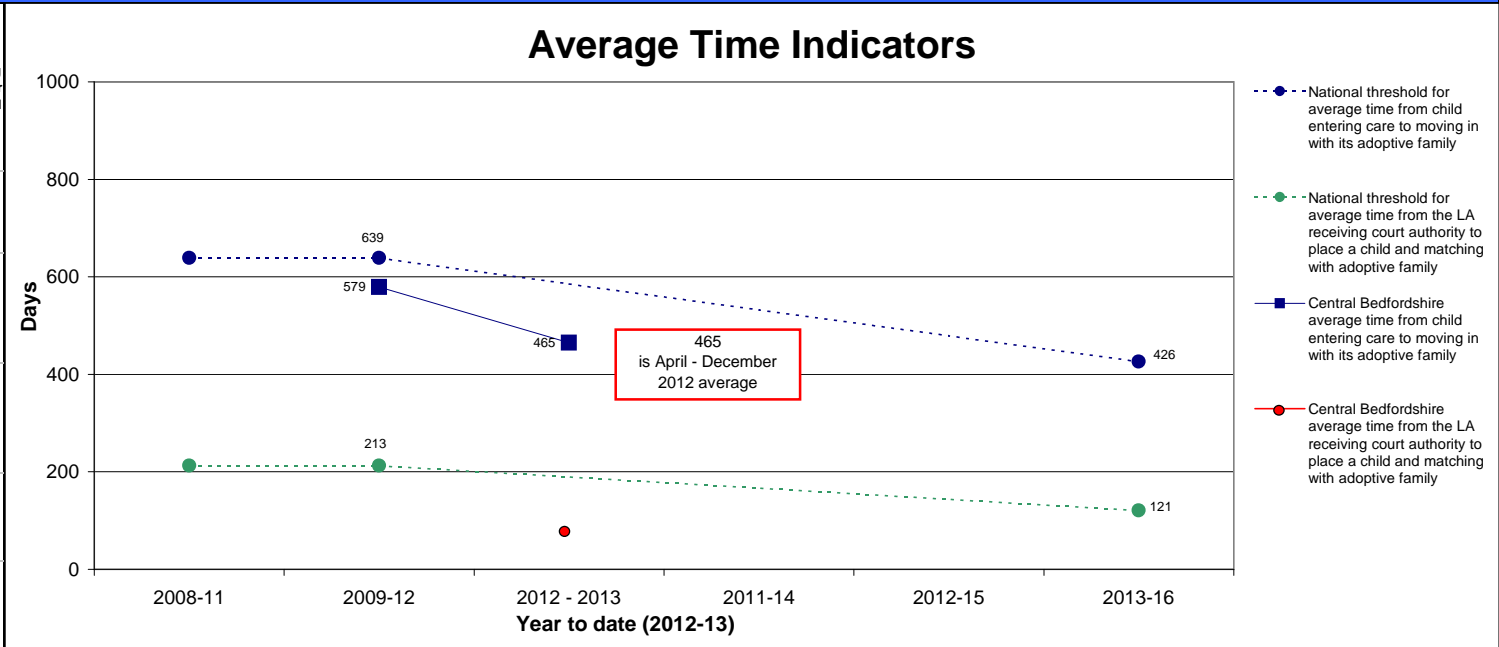
Children, Young People and Families Directorate

Adoption Scorecard (April - December 2012)

Choose Local Authority

Children

	Average time between a child entering care and moving in with its adoptive family, for children who have been adopted (days)	Average time between a local authority receiving court authority to place a child and the local authority deciding on a match to an adoptive family (days)	Children who wait less than 21 months between entering care and moving in with their adoptive family (number and %)
LA's year to date average 2012-2013	465	88	4 (100%)
1 year trend - Improvement from 2011 to 2012	n/a	n/a	n/a
3 year trend - Improvement from 2008-11 to 2009-12	n/a	n/a	n/a
England 3 year average (2009-12)	636	195	10,180 (56%)
Distance from 2010-13 performance threshold	Threshold met	n/a	n/a



Prospective Adopters

Indicators to be agreed	Indicators to be agreed	Indicators to be agreed
Data not available until 2013		

Related Information

	Adoptions from care (number adopted and % leaving care who are adopted)	Number and % of children for whom the permanence decision has changed away from adoption	Average time between a child entering care and moving in with its adoptive family. Where times for children who are adopted by their foster family are stopped at the date the child moved in with the foster family (days)	Adoptions of children from ethnic minority backgrounds (number adopted and % of BME children leaving care who are adopted)	Adoptions of children aged five or over (number adopted and % of children aged 5 or over leaving care who are adopted)	Average length of care proceedings locally (weeks)	Number of children awaiting adoption (as at 31 Dec 2012)	Number of approved prospective adopters (as at 31 Dec 12)
LA's year to date average 2012-2013	4 (6%)	2 (6%)	465	0 (0%)	0 (0%)	46 (04/09-03/12)	25	26
England 3 year average (2009-12)	9,740 (12%)	1,360 (7%)	546	1,490 (6%)	2,520 (4%)	53	5,750	Data not available

Adoption Scorecard (CBC = April - December 2012)

Statistical Neighbour Comparisons																
		Children			Prospective Adopters <small>(Data not available until 2014)</small>			Related Information								
		Average time between a child entering care and moving in with its adoptive family, for children who have been adopted (days)	Average time between a local authority receiving court authority to place a child and the local authority deciding on a match to an adoptive family (days)	Children who wait less than 21 months between entering care and moving in with their adoptive family (%)	Indicators to be agreed	Indicators to be agreed	Indicators to be agreed	Adoptions from care (% leaving care who are adopted)	% of children for whom the permanence decision has changed away from adoption	Average time between a child entering care and moving in with its foster family, for children who have been adopted by their foster parents (days)	Adoptions of children from ethnic minority backgrounds (% of BME children leaving care who are adopted)	Adoptions of children aged five or over (% of children aged 5 or over leaving care who are adopted)	Average length of care proceedings locally (weeks)	Number of children awaiting adoption (SN as at 31 March 2012 CBC as at 31 December 2012)	Number of approved prospective adopters (as at 31 December 2012) <small>(SN Data not available)</small>	
823	Central Bedfordshire	465	88	100	-	-	-	6	6	465	0	0	46 (04/09-03/12)	25	26	
850	Hampshire	Extremely Close	566	175	60	-	-	-	10	7	511	8	3	54	85	-
869	West Berkshire	Very Close	405	84	57	-	-	-	10	0	364	x	x	42	15	-
881	Essex	Very Close	689	263	55	-	-	-	12	9	618	9	5	52	125	-
919	Hertfordshire	Very Close	642	187	47	-	-	-	9	x	591	6	4	56	65	-
895	Cheshire East	Very Close	704	278	46	-	-	-	13	7	534	13	4	52	35	-
867	Bracknell Forest	Very Close	x	x	78	-	-	-	5	x	x	0	x	41	15	-
803	South Gloucestershire	Very Close	532	154	41	-	-	-	6	x	448	x	x	57	15	-
937	Warwickshire	Very Close	562	117	65	-	-	-	11	4	512	x	5	57	30	-
855	Leicestershire	Very Close	549	143	56	-	-	-	8	0	440	0	2	46	25	-
334	Solihull	Very Close	491	101	57	-	-	-	4	x	430	x	x	58	20	-
	Statistical Neighbours		571	167	56	-	-	-	9	5	494	6	4	52	43	-
970	England		636	195	56	-	-	-	12	7	546	6	4	53	5,750	-

Notes for all indicators:

- Percentages have been derived from unrounded numerator and denominator figures.
- Percentages have been rounded to whole numbers but where the numerator was five or less or the denominator was 10 or less, they have been suppressed and replaced by a cross (x).
- Numbers in the related information section of the scorecard are rounded to the nearest 5 children.
- The average number of days have been derived from unrounded numerator and denominator figures and are presented rounded to the nearest day.
- The distance from the 2010-13 performance threshold has been derived from unrounded figures and presented rounded to the nearest day. Therefore the difference between the 3 year average and the 2010-13 threshold may not be the same as the distance from the 2010-13 performance threshold.
- Symbols used:
 - x Figures not shown in order to protect confidentiality.
 - .. Not applicable, i.e. no children in the cohort.
 - No change in the three year average
- All figures exclude children looked after under an agreed series of short term placements.

Notes for individual indicators:

	Latest data	Data included in average	When will the next data be available?	Where can I find the numerators and denominators for percentages	Notes
Average time between a child entering care and moving in with its adoptive family, for children who have been adopted (days)					
Indicator A1	2012	2010 2011 2012	Data for 2013 will be available from Autumn 2013	http://www.education.gov.uk/rsgateway/DB/SFR/s001084/index.shtml The number of children who were adopted can be found in table LAE1	1. This indicator includes all children adopted in the period 1 April 2009 to 31 March 2012 that were placed for adoption immediately prior to their adoption. 2. Time is calculated between a child starting to be looked after and their placement for adoption, i.e. the date they move with their adoptive family. Only children with valid data are included. 3. Figures are rounded to the nearest day.
Average time between a local authority receiving court authority to place a child and the local authority deciding on a match to an adoptive family (days)					
Indicator A2	2012	2010 2011 2012	Data for 2013 will be available from Autumn 2013	Underlying figures are not currently published	1. This indicator includes all children adopted in the period 1 April 2009 to 31 March 2012 that were placed for adoption and on a placement order or freeing order immediately prior to their adoption. 2. Time is calculated between receiving court authority to adopt (granting of placement order/freing order) and matching with adopters. A time of zero is assigned to children who were matched before court authority was received. 3. Figures are rounded to the nearest day.
The number and percentage of children who wait less than 21 months between entering care and moving in with their adoptive family					
Indicator A3	2012	2010 2011 2012	Data for 2013 will be available from Autumn 2013	Underlying figures are not currently published	1. This indicator includes all children adopted in the period 1 April 2009 to 31 March 2012 that were placed for adoption immediately prior to their adoption <u>and</u> all children with a current adoption plan at 31 March 2012 (excluding those where the decision to adopt has been reversed). When adoption is the preferred option for permanence this is referred to as the adoption plan. 2. Time is calculated between a child starting to be looked after and their placement for adoption, i.e. the date they move in with their adoptive family. Only children with valid data are included. Children are flagged if they waited less than 21 months (measured at 639 days) between starting to be looked after and being placed for adoption or had not yet been looked after for 21 months at 31 March 2012. 3. The numerator is therefore all adopted children who were placed for adoption first who were placed less than 21 months after becoming looked after <u>and</u> all children looked after at 31 March 2012 with a current adoption decision who were placed less than 21 months after becoming looked after or who had not yet been looked after for 21 months. 4. The denominator is therefore all adopted children who were placed for adoption first <u>and</u> all looked after at 31 March with a current adoption decision.
Adoptions from care (number adopted and percentage leaving care who are adopted)					
Indicator A4	2012	2010 2011 2012	Data for 2013 will be available from Autumn 2013	http://www.education.gov.uk/rsgateway/DB/SFR/s001084/index.shtml The number of children leaving care can be found in table LAD1 and the number of children who were adopted can be found in table LAE1	1. Only the last occasion on which a child ceased to be looked after in each year has been counted. A child who ceased to be in care in more than one year will be counted more than once. 2. This indicator compares the number of children who ceased to be looked after in the period 1 April 2009 to 31 March 2012 with the number of children who were adopted during that period.
The number and percentage of children for whom the permanence decision has changed away from adoption					
Indicator A5	2012	2010 2011 2012	Data for 2013 will be available from Autumn 2013	Underlying figures are not currently published	1. The denominator includes all children with an ongoing adoption decision in the period 1 April 2009 to 31 March 2012. (The adoption decision date may be prior to 1 April 2009.) The numerator includes all children with an ongoing adoption decision in the period 1 April 2009 to 31 March 2012 for whom the decision was reversed in the period 1 April 2009 to 31 March 2012.
Average time between a child entering care and moving in with its adoptive family adjusted for foster carer adoptions, for children who have been adopted (days)					
Indicator A10	2012	2010 2011 2012	Data for 2013 will be available from Autumn 2013	http://www.education.gov.uk/rsgateway/DB/SFR/s001084/index.shtml The number of children who were adopted can be found in table LAE1	1. This indicator includes all children adopted in the period 1 April 2009 to 31 March 2012 that were placed for adoption immediately prior to their adoption. 2. This indicator includes the same children as indicator A1 and the average time is calculated in the same way for children who are not adopted by their foster carers i.e. time is calculated between a child starting to be looked after and their placement for adoption (the date they move with their adoptive family). However the average time for children who are adopted by their foster carers is calculated differently to A1. Where children are adopted by their foster carer, the time is measured until the date they moved in with their foster carer. Only children with valid data are included. 3. Figures are rounded to the nearest day.
The percentage of black and minority ethnic children leaving care who are adopted					
Indicator A6	2012	2010 2011 2012	Data for 2013 will be available from Autumn 2013	2011 data: http://www.education.gov.uk/childrenandyoungpeople/families/adoption/b0076713/datapack	1. Only the last occasion on which a child ceased to be looked after in the year has been counted. 2. The numerator includes all children with a known ethnicity of Asian, Black, Chinese, Mixed or Other who were adopted in the period 1 April 2009 to 31 March 2012. The denominator includes all children within these ethnic groups who ceased to be looked after for any reason in the same time period. Numerators and denominators exclude all children where ethnicity was refused or not obtained. 3. Percentages show the proportion of all black and minority ethnic children leaving care who are adopted. Therefore if a local authority has a low proportion of black and minority ethnic children in their care population then the denominator will reflect this low number.
The percentage of children aged 5 or over leaving care who are adopted					
Indicator A7	2012	2010 2011 2012	Data for 2013 will be available from Autumn 2013	2011 data: http://www.education.gov.uk/childrenandyoungpeople/families/adoption/b0076713/datapack	1. Only the last occasion on which a child ceased to be looked after in the year has been counted. 2. Age on leaving care. 3. The numerator includes all children who were adopted in period 1 April 2009 to 31 March 2012 who were aged 5 or over. The denominator includes all children who were aged 5 or over when they ceased to be looked after in the same time period.
Average length of care proceedings locally (weeks)					
Indicator A8	2012	2010 2011 2012	Data for 2013 will be available from Autumn 2013	Figures are currently not publicly available	1. Figures are provided from the Cafcass National Case Management System (CMS). 2. The unit of measurement is a care application. An application can involve multiple children. CMS is a live system and any late entries will be accounted for at the time of release of subsequent updates to this data. 3. Average care duration is calculated from date of care application to the court to date application completed on CMS in the selected time period. Averages are based on care applications completed in the period. 4. The average length of care proceedings locally includes all care proceedings which the local authority has initiated, including care proceedings which take place in courts outside of the local authority area. 5. All data updated on 25 September 2012. Changes to figures are due to late updates in information within the CMS
Number of children awaiting adoption					
Indicator A9	2012	2010 2011 2012	Data for 2013 will be available from Autumn 2013	Underlying figures are not currently published	1. This indicator includes all children with an adoption plan in year ending 31 March 2012 that were still looked after at 31 March 2012 and who had <u>not</u> been placed for adoption at 31 March 2012. When adoption is the preferred option for permanence this is referred to as the adoption plan.

Adoption Scorecard